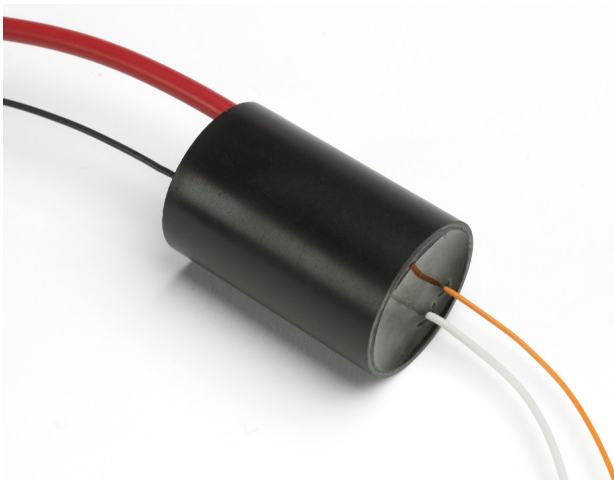




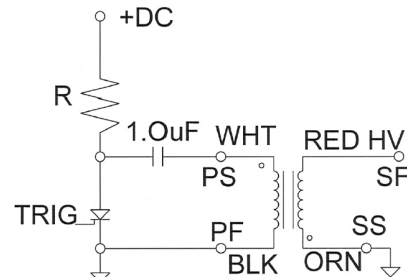
Trigger Transformer NL-103

It is common practice for arc and flash lamps to require a trigger pulse to cause the initial ionisation of the gas. This pulse is usually in the order of 20 – 30 kV with a pulse width of a few microseconds. In the case of pulse lamps without a simmer supply, the lamp needs to be triggered for every pulse. Simmered pulse lamps and CW lamps are only triggered when the lamp is switched on. We offer quality transformers for external triggering of lamps.



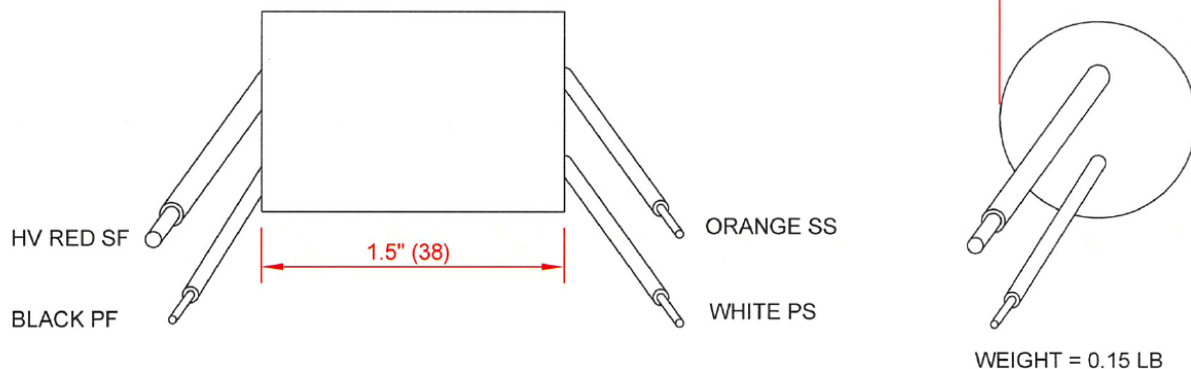
Specifications

Model	NL-103
Maximum DC input (V)	200
Output voltage (kV)	20
Primary peak current	110 Amps
Turns ratio (sec. to prim)	112 : 1
Hold-off voltage (sec to prim)	5 kV DC
Rise time 10%-90%	1.0uSec max
Pulse width 50% amplitude	1.5uSec min



TYPICAL CIRCUIT

Lead lengths are 10"(254)Min.



International contact
Heraeus Noblelight Ltd.
 Cambridge Science Park
 Cambridge CB4 0FQ
 Phone +44 1223 423324
 Fax +44 1223 423999
hnl-laserlamps@heraeus.com
www.heraeus-noblelight.com/arcflash

USA
Heraeus Noblelight LLC
 1520C Broadmoor Blvd.
 30518 Buford, GA
 Phone +1(770)418 0707
 Fax +1(770)418 0688
info@noblelight.net

China
Heraeus Noblelight (Shenyang) LTD.
 5F, 16th Building,
 No. 99 Tianzhou Road
 200233 Shanghai
 Phone +8621 5445-2255
 Fax +8621 5445 2410